

DDP12xx series400 Digital Dimmer Pack



The digital dimmer pack DDP12xx is designed to fulfil all the requirements for most light demanding applications such as theatres, live concerts and also permanent installations.

The unit is controlled by a high-speed RISC processor with high resolution D/A converter. This technology guarantees a trouble-free operation and a high proof against negative influence of surroundings with top class rise-time 400us.

Power supply

AC3x230/400V / 50Hz, 3x40A max

Operating temperature

-20 °C to +40 °C

Housing

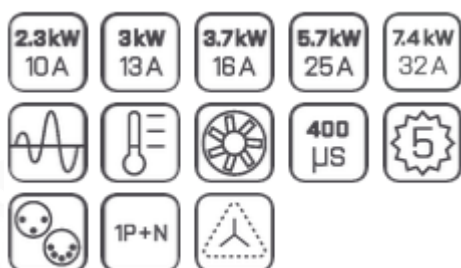
Steel; with gray powder coating

Dimensions & Weight

483 x 132 x 460mm, 28kg

Warranty

5 years



DDP12xx features:

- Integrated GFI or Main switch
- Quick setting using encoder & 2 buttons
- User friendly menu structure
- Main voltage, temperature, DMX line status on LCD
- 16 recordable scenes with playback at various circumstances
- DMX ON/OFF, POWER cycle
- Scene call via analogue input or 13 control channels
- DMX/ANALOG/MANUAL or SCENE controlled pack
- Software patch
- Preheat & curve options for each channel
- Manual control
- Electronic lock-out
- SRS Generator technology
- SRS Studio Rise-time: 400us
- SRS Thermal management: 100% duty cycle
- SRS Variospeed: temperature controlled fan
- Automatic switch off at critical temperatures
- High efficiency, less than 2% thermal loss per channel on full load

DDP12XX_en_datasheet_M017

Configuration table:

Type	DDP1210	DDP1210B	DDP1213	DDP1213B	DDP1216	DDP1216B
Number of channels	12					
Type of protection	Phase only					
Maximum output current per channel	10 A	10 A	13 A	13 A	16 A	16 A
Main voltage / Frequency	3 x 230 V / 40-65Hz					
Maximum current	3 x 40 A	3 x 40 A	3 x 52 A	3 x 52 A	3 x 64 A	3 x 64 A
Load	50 W					
min.						
max.	2300 W	2300 W	2990 W	2990 W	3680 W	3680 W
Main protection	30 mA GFI	4-pole switch	30 mA GFI	4-pole switch	30 mA GFI	4-pole switch
Input connectors	DMX					
analogue	Neutrik XLR 3 & 5-pin SUB-D25 / SUB-HD15					

Variable outputs:

K0: WAGO Terminal & 6x PG



K3: 2x Socapex19



K4: 12x French Schuko

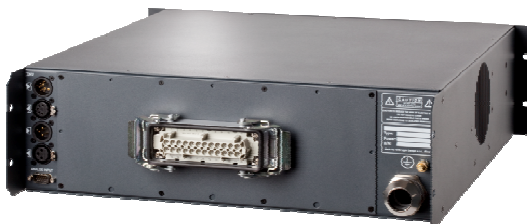
K5: 12x Schuko

K6: 12x Danish

K7: 12x UK socket

K8: 12x SWISS socket

K1: 1x ILME/Harting 24



K2: 2x ILME/Harting 16 type A or B



Other outputs available on request